



Ute Mesh

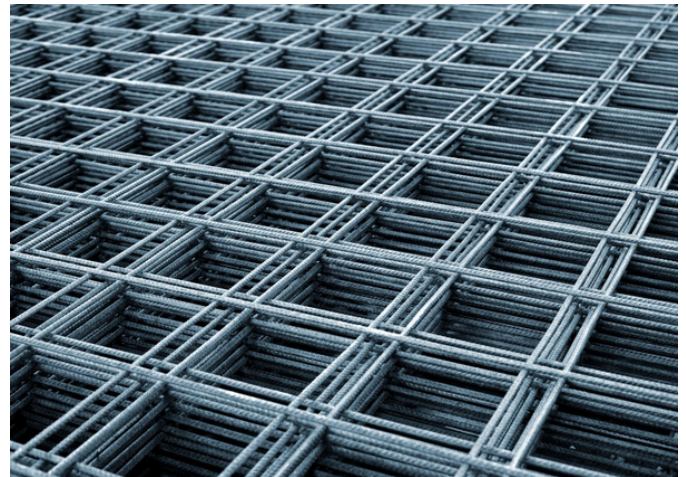
Compliant with AS/NZS 4671: 2001 Steel Reinforcing Materials
TMR Registered Supplier



Product Information

Ute sized mesh is typically used for DIY construction or smaller scale construction projects. This is simply because not all smaller-scale contractors have a truck that's physically big enough to transport sheets of standard mesh which are 6m x 2.4m in size.

Ute mesh is made both short and narrow at 4m x 2m to enable legal transport on a standard ute.



Stock Ute Mesh

Product Code	Size (mm)	Spacings (mm)	Weight (kg)
M2G72	4000 x 2000	200 x 200	22 kg